

a²ru

ALLIANCE FOR THE ARTS
IN RESEARCH UNIVERSITIES

2017-2018 ANNUAL REPORT



a2ru-communications@umich.edu



+1-734-763-2318



a2ru.org





Contents

Organization.....	3
ArtsEngine.....	6
Convenings.....	8
Insights.....	16
Resources.....	18
Casemaking & Storytelling.....	19

A2RU OUR MISSION & VISION

The Alliance for the Arts in Research Universities (**a2ru**) is a partnership of more than forty institutions committed to ensuring the greatest possible institutional support for the full spectrum of arts and arts-integrative research, curricula, programs, and creative practice for the benefit of all students and faculty at research universities and the communities they serve.

a2ru advances the full range of arts-integrative research, curricula, programs, and creative practice to acknowledge, articulate, and expand the vital role of higher education in our global society. a2ru envisions a world in which universities—students, faculty, and leaders—acknowledge, deeply embed, and seamlessly integrate the arts in pursuit of basic knowledge and in everyday practice.

44
Partners

5
Convenings

\$12k
in Scholarships

a2ru Partner Institutions

Arizona State University
Boston University
Carnegie Mellon University
Dartmouth College
Iowa State University
James Madison University
Johns Hopkins University
Kent State University
Louisiana State University
Massachusetts Institute of Technology
Michigan State University
Northeastern University
The Ohio State University
Oregon State University
Penn State

Princeton University
Rochester Institute of Technology
Texas Tech University
Tufts University
The University of Alabama
The University of Alabama at Birmingham
The University of Arizona
University of Arkansas
University of California, Berkeley
University of Cincinnati
University of Colorado Boulder
University of Colorado Denver
University of Florida
The University of Georgia
University of Houston

University of Illinois at Urbana-Champaign
The University of Iowa
The University of Kansas
University of Michigan
University of Nebraska-Lincoln
University of North Texas
University of Technology Sydney
University of Texas at Dallas
The University of Utah
The University of Virginia
University of Wisconsin-Madison
Virginia Commonwealth University
Virginia Tech
Washington University in St. Louis

Partnerships

In May 2011, the University of Michigan's ArtsEngine hosted a Michigan Meeting around The Role of Arts-Making and the Arts in the Research University. One hundred fifty presidents, provosts, deans, directors, and other faculty and administrative leaders from 43 research universities were in attendance. a2ru, started as "ArtsEngine National," formed shortly thereafter. Today, the Alliance is still housed under ArtsEngine and is now comprised of more than 40 research universities.

A2RU LETTER TO OUR PARTNERS

Investing in the Alliance for the Arts in Research Universities means championing the importance of arts integration in higher education and its importance for the future. Our partners grapple with how to reach the threshold of providing a comprehensive interdisciplinary education, as there is no singular goal post or set of guidelines for this movement prior to defining what it *actually means* and *how to do it*.

These two imperatives have defined a2ru's work this past year. Our research team has delved into a series of interviews to find patterns in perspectives on arts integration and interdisciplinary practice, research, and teaching. These explorations resulted in white papers and research briefs, including *What Is Research*, *What Is Arts Research*, and *What Is Arts Integration*. We are engaging partners in mapping the answers to better inform the national conversation on arts integration.

In this national discourse, arts integration, and interdisciplinary experiences of all kinds are increasingly seen as essential to providing students with the best education. It is important for institutions to stay competitive: to attract the best faculty talent and students, and ensure students have both the deep (single disciplinary) and broad (interdisciplinary, including collaboration, empathy, creativity) skills to best benefit society after graduation.

Our series of town hall gatherings will continue conversations launched in May 2018, when 50 leaders from higher education, government, philanthropy, and industry convened at the National Academy of Sciences, Engineering, and Medicine in Washington, D.C., to discuss how to transform higher education for an enlightened, better prepared, more competitive workforce and citizenry. The discussion was based on a report to describe the known impact of integrative approaches to teaching and learning in higher education on students' academic performance and career readiness. The town halls, scheduled across the country throughout this year, will serve as opportunities to convene leaders and practitioners in a variety of fields

to continue this discussion and to collaborate on ways to integrate these into initiatives unique to each region and institution.

a2ru's workshops, webinars, and summits support a change in the culture of higher education. The task is to define practical pathways for integration and get to the heart of faculty incentives, attitudes, and what's needed to promote skills for collaboration. We focus on the capacities needed to empower leaders to get to where they need to be to accomplish this change.

We talk every day to leaders—including staff, policymakers, administrators, faculty, and students—who are making sense of what is happening with interdisciplinary work on their campuses. Our partner profiles demonstrate how a2ru partners are at the vanguard of interdisciplinary work and arts integration. It is hard and rewarding work, transcending the deep channels of single discipline structures and finding new allies. The alliance acknowledges, supports, chronicles, studies, and amplifies this work.

Together, we've made great strides this year, harnessing the power of our alliance and its networks to connect knowledge and empower leaders to cultivate a sea change in higher education.

Marvin G. Parnes
Interim Executive Director

Maryrose Flanigan
Associate Director

-October 2018



ARTSENGINE IS THE DRIVER FOR ARTS INTEGRATION AT U-M

Created in 2006, ArtsEngine is an interdisciplinary arts integration initiative of the now four North Campus schools and colleges at the University of Michigan—the A. Alfred Taubman College of Architecture + Urban Planning, the Penny W. Stamps School of Art & Design, the School of Music, Theatre & Dance, and the College of Engineering. These schools and colleges have recently been joined in their support by the U-M School of Information. At its inception, the visionary deans of these schools and colleges recognized that our research university (and higher education in general) would be undergoing a number of fundamental shifts in the coming decades—driven by technology, globalization, generational change, and the need for interdisciplinary collaboration to solve complex problems on a scale not recently experienced. To remain relevant and necessary to our free and democratic society, universities needed to prepare students, engage

faculty and scholars, and inform society from a more balanced and unified perspective—one that extends beyond “STEM to STEAM” or the economic argument for the value of the arts, toward full integration among and collaboration between the arts and the sciences, engineering and design, technology, and the humanities. From that understanding, ArtsEngine pursues its mission “to inspire, foster, and strengthen intellectual collisions and durable collaborative practices driven by the arts, design, engineering, and technology to fully maximize the potential of students and faculty at the University of Michigan.” To meet these challenges, ArtsEngine’s four major areas of work have evolved to encompass ArtsEngine at U-M; the UARTS suite of course offerings; the Living Arts residential community; and our national professional organization, the Alliance for the Arts in Research Universities (a2ru).

ARTSENGINE AT U-M

ArtsEngine programs and initiatives are designed to support students and faculty interdisciplinary projects, research, and collaborations at U-M. These include grant awards (Student MicroGrants, Arts Integrative Interdisciplinary Graduate and Faculty Research Grants, and Interdisciplinary Visiting Scholar Grants), the Art/Sci Student Residencies (supporting the engineer in the artist’s studio, the artist in the engineering lab), professional development and collaboration opportunities (ConFabCafés, Graduate Symposia on Interdisciplinary Arts Integration), co-sponsored events (Science As Art Contest, Art 4 Activism Competition), partnered student organizations, and build/design team competitions (Duderstadt Fellows Challenge).



UARTS

The UARTS suite of courses was created to expand student access to courses centered on the arts, creative process, interdisciplinary instruction, and problem- or project-based learning. The two foundational courses, *UARTS 150: Intro to Creative Process* and *UARTS 250/550: Creative Process* are taught annually by faculty in the schools and colleges that support ArtsEngine. The UARTS Faculty Course Development Grant program is designed to support the development of courses to be offered under the UARTS prefix that integrate the arts and design with other disciplines, especially those in engineering and the sciences.



Verticality, UARTS 250 class project

LIVING ARTS RESIDENTIAL COMMUNITY

More than 80 students from engineering, art and design, architecture and urban planning, and music, theatre, and dance participate every year in the Living Arts “maker community.” Activities include participation in the interdisciplinary team-taught *UARTS 150: Intro to Creative Process*, guest artist workshops, alumni interactions, and a Creative Capstone Project.

Looking forward, ArtsEngine envisions a future in which arts and design are understood to be central to the success of every complex endeavor, as it is through the arts that the scope of human experience in creativity, innovation, empathy, culture, and knowledge is learned, expressed, and distributed, both for the common good and the development of the individual.

We are proud to serve as the catalyst and organizational foundation for the Alliance for the Arts in Research Universities as a vital channel for the journey toward that envisioned future.



“The arts make real what defines us as humans. They are essential to research, helping us to question our assumptions, to take risks, and to experiment in our search for useful answers.”

Martin Philbert
Provost, University of Michigan

CONVENINGS

Pre-Conference Workshop

Creative Placemaking

November 1, 2017

Hosted by Boston University

National Conference

Arts in the Public Sphere: Civility, Advocacy and Engagement

November 1 - 4, 2017

Hosted by Northeastern University

Co-hosted by Massachusetts Institute of Technology and Tufts University



Jamie Bennett, ArtPlace America, and David C. Howse, Emerson College
Photo credit Kit Castagne

The fifth annual national Alliance for the Arts in Research Universities conference convened Wednesday, November 1st - Saturday, November 4th with over 300 attendees from institutions worldwide. Hosted by Northeastern University, with additional events throughout hosted by Boston University, Massachusetts Institute of Technology, and Tufts University, the conference focused on creative placemaking with plenary panels as well as breakout sessions, panels, working groups, performances, papers, presentations, and discussions led and moderated by members of a2ru's extensive partner institutions and industry networks.

The 2017 agenda included plenary panels and conversations from leaders in the field as well as intensive hands-on working groups, presentations, papers, and performances, and opportunities to network at various events hosted throughout by Northeastern University, Massachusetts Institute of Technology Museum, School of the Museum of Fine Arts at Tufts University, and a2ru.

a2ru also convened 97 leaders from higher education and other sectors to explore the subject of creative placemaking in higher education. This session, hosted by Boston University preceded the 2017 a2ru national conference. The group met to discuss creative placemaking at the research university



Rick Lowe, Project Rowle Houses; Maria Rosario Jackson ASU/The Kresge Foundation, and Leila Kinney, MIT. Photo credit Kit Castagne



LeeAnn Garrison and Harriet Nembhard, Oregon State University
Photo credit Dave Green

and explore ideas to lead in meaningful societal change via creative placemaking in higher education.

The Creative Placemaking movement promotes building cross-sector partnership to bring the arts and culture into a broader conversation around economic and community development. This way of thinking has swept the nation in the last decade and produced millions of grant dollars from major arts funders. However, it is still a challenge to navigate partnerships, find resources, and build a case for the role of placemaking across diverse institutions.

This past year, a2ru, the Bolz Center for Arts Administration, and Blackbaud came together in an effort to engage and unite creative placemaking practitioners—particularly

in higher education—to funding, toolkits, and each other. a2ru invited city officials, artists, academics, activists, and researchers to give brief “lightning” talks in pairs on various topics related to the integration of the arts in aspects of creative placemaking both in the higher education and public realm. Categories were chosen based on ArtPlace America’s community development matrix. After the first two sets of lightning presentations, participants self-selected into related working groups to tackle related topics before sharing the highlights of their discussions in these groups.

Garry Golden, an academically trained Futurist, worked with a2ru to issue a survey on Higher Education and Creative Placemaking: Mapping Trends which was specifically geared toward this audience and informed his futuring exercise presented at the workshop in Boston. A futuring exercise and presentation bolstered the mapping efforts of Creative Placemaking by taking current data from the survey of community engagement efforts and Creative Placemaking from research universities as well as the “social listening” results from research partners at the Bolz Center for Arts Administration and Blackbaud. A set of challenges, recommendations, and next steps and was published in the pre-conference workshop report which included analysis and comparison of data from both Creative Placemaking surveys.

This workshop was made possible by support from a2ru and The Andrew W. Mellon Foundation.



Atyia Martin, Chief Resilience Officer for the City of Boston
Photo credit Dave Green

Leadership Workshops

Hosted by the University of Michigan

Tenure & Promotion

April 30 - May 1, 2018

a2ru hosted a two-day Leadership Workshop on Tenure and Promotion in the arts, design, and interdisciplinary practice. Entitled *A Challenge Worth Tackling*, the workshop took place on the campus of the University of Michigan in Ann Arbor, and it was designed to support faculty and academic leaders who are charged with Reappointment, Tenure, and Promotion policy (hereafter, RTP). The workshop addressed some of the thorny issues around RTP when faculty work across traditional modes of scholarship and chart new territory. Even in universities where there is enthusiasm about interdisciplinarity, many faculty who bridge different fields find that RTP policies do not always value some of the most innovative aspects of their work.

Thirty workshop participants from institutions across the country took on the challenge of identifying good RTP practices in the context of interdisciplinary teaching and research. The hands-on workshop was structured as a

design sprint – with facilitation to support teams as they collaboratively prototyped new practices and worked through common challenges around RTP.

The workshop tackled issues like managing expectations from a new faculty member's point of hire through their RTP journey, techniques for supporting good judgment around criteria and incentives for RTP, and creating structures for productive conversations about RTP policy in one's own department and institution.

Participants found the workshop challenging and energizing, and they emerged with insights and new frameworks to help guide their work on their own campuses. This was one of the first in a series of Leadership Workshops that a2ru is designing to help foster critical thinking and engagement around new and better practices for arts integration and interdisciplinarity in research universities. By fostering professional development among the nation's academic leaders, a2ru is helping to support the future of higher education with fresh ideas and sources of inspiration, and to recast teaching and research for current and future generations.



"As I left, I received a message from a faculty member in my unit wanting to revisit and revise our RPT criteria. Now, I have tools and things to consider that will add to our collective conversation and make it more productive, which was not the case several years ago when we revised them."

Participant in a2ru's Tenure & Promotion Workshop



Foresight & Collaboration **June 7 - 8, 2018**

a2ru's second Leadership Workshop addressed issues of Foresight and Collaboration, especially as they are relevant for academic leaders at universities engaged in interdisciplinary practice. Building on the successes and lessons of our Leadership Workshop on Tenure and Promotion, a2ru welcomed twenty-five participants from research universities across the country to this hands-on workshop on the campus of the University of Michigan in Ann Arbor.

With interdisciplinary collaboration increasingly understood as an integral part of research universities, collaboration is both a topic for exploration and the workshop's operative mode of practice. Participants worked together in small groups, alternating between active collaboration and guided reflection. This process allowed them to assess the effectiveness of their collaborative styles, and immediately put these insights into practice.

Each small group addressed a particular area of concern around interdisciplinary collaboration such as Building

Supportive Institutional Structures, Developing Courses and Curricula, Fostering Relationships and Igniting Collaboration, and Promoting Diverse Ways of Knowing. The challenge for each group was to illuminate their topic through a hands-on, "maker" process. The stakes of the endeavor rose when hypothetical future scenarios were added into the mix.

In addition to its experiential aspects, the workshop also provided participants with expert insights into the topics at hand. a2ru's whitepaper on interdisciplinary collaboration offered frameworks from our research, while short presentations about techniques helped participants navigate the often complicated interpersonal dynamics of collaboration. Participants were able to immediately apply both these theoretical and practical insights to their group projects. This second a2ru Leadership Workshop resulted in a range of positive outcomes, and participants were enthusiastic about returning to their institutions with new information, skills, and perspectives. This workshop experience provided a first iteration that we plan to develop further as an ongoing a2ru program.

These workshops were made possible with support from The Andrew W. Mellon Foundation and a2ru.

Emerging Creatives Student Summit

Spectacle and the Collective Experience

February 15 - 18, 2018

Hosted by Louisiana State University



2018 Emerging Creatives Student Summit class



"Focusing on creating common language, developing our topic with an interdisciplinary approach, and creating both a process and a product which required audience involvement has required me to evaluate my creative process as a theatre-maker and understand that there are many other avenues to explore. The mission of our department beckons us to integrate the practical and the scholarly, and a2ru's Creative Summit allowed me to do just that."

Alex Webster
MFA Performance & Pedagogy Student
Texas Tech University

More than 80 students from 28 research universities participated in the 2018 a2ru Emerging Creatives Student Summit, hosted by Louisiana State University, to problem solve as interdisciplinary teams around the topic of *Spectacle and the Collective Experience*. Participants discussed issues related to the integration of theater and science, the implications of the local Mardi Gras culture, and approaches to tackling social challenges through the lens of spectacle.

This was the fifth of the a2ru Emerging Creatives Student Summits, which are designed to encourage emerging scholars, engineers, artists, and scientists to get a head start on interdisciplinary problem solving with experts from across the country. Previous summits engaged on issues of creative placemaking, interdisciplinary research and practice, social justice, and water. Students had access to industry experts and faculty mentors during the summit as they learned how to collaborate with one another across a wide range of disciplines. Presenters included LSU professors in acting, biological sciences, African American studies, and folklore and gender studies. Students also participated in collaboration workshops led by a2ru Mellon Postdoctoral Fellow, Edgar Cardenas, and University of Michigan professor of dance, Amy Chavasse. Faculty from a2ru partner institutions advised student teams throughout the weekend to help challenge and steer them toward final presentations on the culminating day of the summit.

Students were treated to presentations at the Laser Interferometer Gravitational Wave Observatory (LIGO). Also included were presentation opportunities for graduate students and performances of Tom Stoppard's *Arcadia*.

Student Challenge Grant



Jennifer Krivickas, Assistant VP for Integrated Research at University of Cincinnati helps students develop and tackle their projects at the summit.
Photo credit Edgar Cardenas

Student summit participants had the opportunity to compete for grant funding to support promising collaborations begun at the summit. One interdisciplinary student team was awarded a Student Challenge Grant by the Alliance for the Arts in Research Universities to pursue a project to develop a workshop on collaboration. Team Makin' Rain was awarded \$4,400 plus travel support and will develop a workshop method for honoring the process of creative thought across disciplines. The team includes Jennifer Ezell, a PhD student in theatre from Texas Tech University; Jesus Gonzalez, an MFA student in photography at the University of Houston; Desen Ozkan, an engineering/engineering education PhD student at

Virginia Tech; and Jason Woodworth-Hou, a dramatic media MFA/PhD student at the University of Georgia.

The team has worked over the course of the summer and fall and will present on their project at a gathering of research university administrators, faculty, staff, and students this fall at the 6th Annual National a2ru Conference, *Arts Environments: Design, Resilience, and Sustainability*, November 1-3, 2018, hosted by the University of Georgia.

Professional Development Funding

a2ru was pleased to support 31 students from 15 partner institutions to attend various a2ru-related events. Awards up to \$250 were granted to students based on an application process to attend the 2017 a2ru National Conference in Boston and the 2018 a2ru Emerging Creatives Student Summit in Baton Rouge, LA. a2ru also launched its new Faculty Fellows program, providing funding to early career a2ru faculty to present at events around the world and attend a2ru Leadership Workshops.

\$2,250

2017 National
Conference

\$6,635

2018 Student Summit

\$3,115

Other Events

Webinars



Part of a2ru's work is knowledge-building. a2ru hosted webinars on topics Alliance partners identified as core to our work during the 2015 a2ru National Conference hosted by Virginia Tech.

The Future of Creative Placemaking in Higher Education **January 31, 2018**

Garry Golden, of Futurethink, reprised his session from the November 1 pre-conference workshop hosted by Boston University in which he galvanized participants with insights into what the landscape for future creative placemaking efforts will look like. This webinar was intended for those actively involved in creative placemaking research, practice, or teaching in the community or curious about future trends.



Garry Golden
Futurist
Futurethink



Cluster Hires and Cross-Discipline Appointments **April 13, 2018**

This session addressed cluster hires and cross-discipline appointments. "Cluster hires" were an exciting new trend that peaked a few years ago with many research institutions seriously piloting ambitious programs to kick-start interdisciplinary research and diversify campus climate. This webinar highlighted the promise and perils of hiring outside the comfort zone.



Amy M. Hogan
Assistant Provost for Leadership
Initiatives
Office of the Provost
Virginia Tech



Bain Butcher
Associate Professor School of Art
and College of Medicine
Director, Social Innovation Lab
University of Cincinnati



Robert H. Goldstein
Special Advisor Campus Development
Haas Distinguished Professor
Department of Geology
University of Kansas

Impacts of Arts-Integrative & Interdisciplinary Practice on Research Universities July 18, 2018

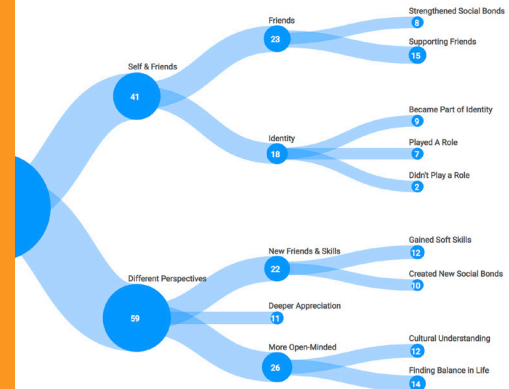
What are the roles and impacts of the arts, design, and interdisciplinary practice on research, teaching, and engagement in research universities? How do they impact students? Faculty? The community? Individual disciplines? What about the products and practices that emerge from the studio, the laboratory, and the community? The a2ru research team presented a high-level overview of findings, including synthesis of the results of over 300 interviews with faculty and academic leadership at over 38 research universities. Also discussed were resources for case-making and next-steps in the research process.



Gabriel Harp
Research Director
ArtsEngine/a2ru
University of Michigan

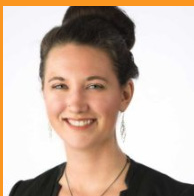


Veronica Stanich
Research Associate
ArtsEngine/a2ru
University of Michigan



Navigating Your Educational Path Toward an Interdisciplinary Career October 4, 2018

What might be needed to create an interdisciplinary career guide or toolkit for students who are looking toward a modern work life? This webinar will include alum from the a2ru Emerging Creatives Student Summits discussing both their interdisciplinary paths and experiences and what they would like to have known or had in support of their educational goals as an undergraduate student.



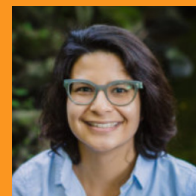
Laura Huisinga
2015 Summit Alumna
Fresno State University



Dorsey Kauffman
2017 Summit Alumna
University of Arizona



David Lydon-Staley
2014 Summit Alumni
University of Pennsylvania



Tess Torregrosa
2017 Summit Alumna
Northeastern University



Grace C. Young
2014 Summit Alumna
MIT

Recordings and audio transcripts of all Circuits webinars are available on the a2ru website.

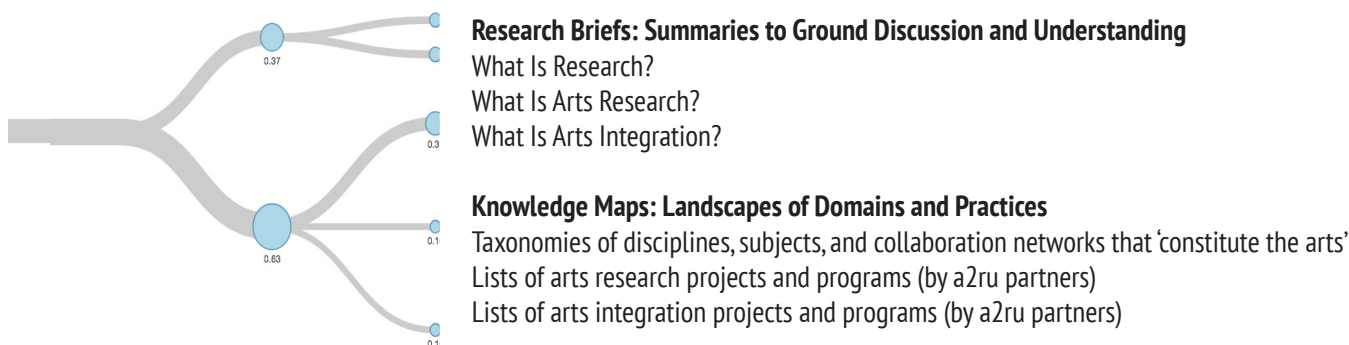
INSIGHTS

a2ru's research clarifies and highlights how the arts—including the fine, applied, and performing arts and design—impact research and knowledge production and teaching and learning experiences in research universities for systematic public benefit.

Our work seeks to address three basic questions to help a2ru partners meet their knowledge, communications, and program implementation goals:

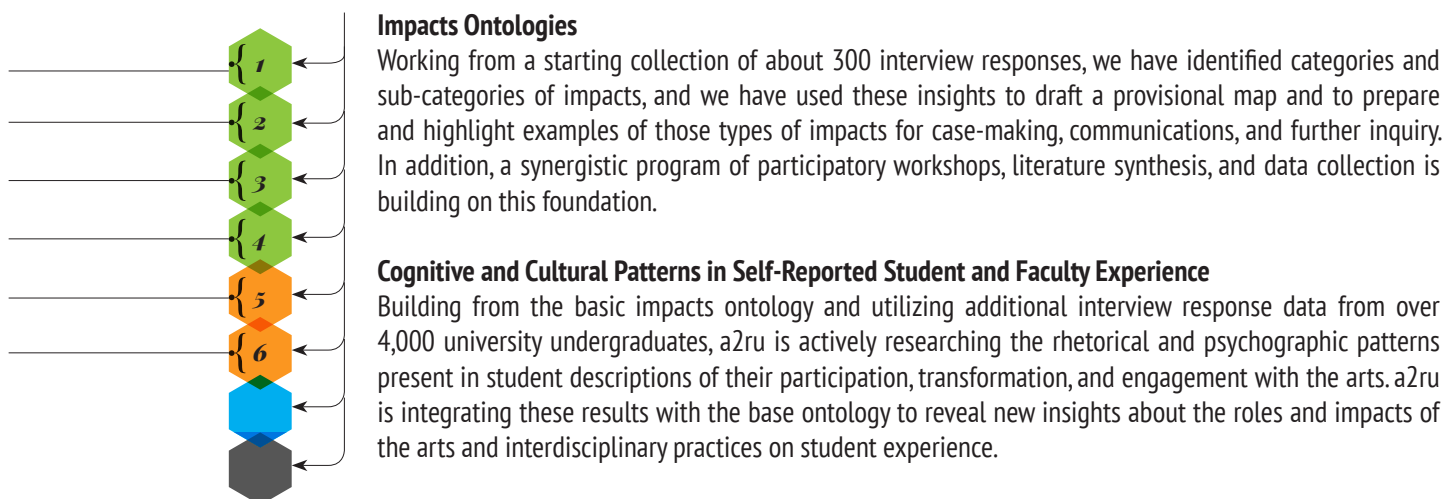
1. What is arts integration?

In interviews with over 300 faculty and administrators from research universities, language presents one of the most striking obstacles to the interdisciplinary and interprofessional work of arts integration and collaborative practice. In response, our research seeks to clarify common sources of ambiguity and build shared understanding. The results provide accessible, reusable resources for communications around programs, research, and curricula. Current and forthcoming releases from a2ru include:



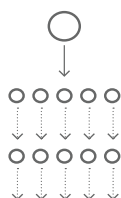
2. Why does arts integration matter?

Our goal is to help a2ru partners, educators, leadership, and the public create greater understanding of the diversity, richness, breadth, and depth of the role of the arts and design in higher education. a2ru's work also helps identify and define new heuristics for studying and evaluating those same outcomes by orienting practitioners and researchers toward the problems, challenges, and shape of knowledge that exists and how it can be made valuable for decision making, learning, and community development. Current and forthcoming releases from a2ru (in association with ArtsEngine at the University of Michigan) include:



3. How do you do arts integration?

Pulling from over 8,000 individual interview responses with university faculty, staff, and students, a2ru is cultivating collective know-how to articulate, refine, activate, and refresh techniques for better practices and arts integration. Current and forthcoming releases, artifacts, and programs from a2ru include:

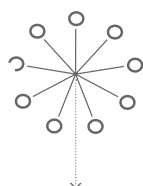


Insights and Frameworks for Arts Integration and Interdisciplinary Collaboration

Insights and advice to foster leadership, bridge differences, create positive environments, and build solid structures for arts integration and interdisciplinary collaboration.

Patterns and Practices

Concrete solutions and better practices for accomplishing the work of arts integration in interdisciplinary collaboration, teaching, and research.



Tools for Sensemaking, Activation, and Amplification

a2ru is founded on the maker traditions. We produce templates, tools, games, workshops, rubrics, maps, artifacts, agendas, programs, platforms, and experiences that transform information into insight and knowledge into action.

Leadership Roles and Values

Insights and advice on the role of leadership for interdisciplinary programs and the value of arts integration for research universities.

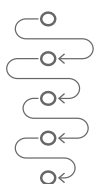


Leadership Workshops

Workshop programs for faculty and staff on topics ranging from tenure and promotion to collaboration and curricula—designed to connect knowledge, empower leadership, activate, enliven, and inspire.

Insights for Tenure and Promotion Policies and Practices

A range of actions to cultivate policy that embraces disciplinary, interdisciplinary, and creative work equally in two distinct—but simultaneous and intertwining—journeys. One is at the institutional level; driven by upper-level university administration, it entails the assessment, mapping, maintaining, and implementation of inclusive policy. The other, at the individual level, centers on faculty and their personal professional trajectories from hire to tenure and on to promotion.



a2ru's research methodology draws from a variety of frameworks, literatures, tools, and traditions—from social science to data science and from strategic foresight to participatory design. To accomplish this work, a2ru's research team works to articulate, clarify, and prioritize key research questions, collect and assemble evidence, apply dedicated and rigorous analytical tools and methods, synthesize insights from across nascent domains and practices, organize participatory experiences, and develop new frameworks for understanding and activating the insights and practices that emerge.

a2ru's research programs are supported by The Andrew W. Mellon Foundation, 40+ partners of the Alliance for the Arts in Research Universities, the National Endowment for the Arts, and ArtsEngine—a strategic collaboration of the College of Engineering, the Penny W. Stamps School of Art & Design, the A. Alfred Taubman College of Architecture + Urban Planning, the School of Music, Theatre & Dance, and the School of Information at the University of Michigan.

TOOLS, PLATFORMS, & RESOURCES

a2ru addresses the needs of the network by creating tools and processes for Alliance partners to work between and beyond individual disciplines to ready the path to collaboration. Through convenings, workshops, webinars, and a2ru's partner profiles—these insights and discussions help a2ru move from its initial core themes (such as arts and health; creative placemaking; arts entrepreneurship) to next-generation comprehensive programs to advance arts-integrated practice, research, and teaching. Further information on all tools, platforms, and resources can be found online at [a2ru.org](https://www.a2ru.org).

Website

The a2ru website is an online community for Alliance partners to exchange insights, share knowledge, demonstrate successes, and inform each other's research, teaching, and practice. The website houses platforms and tools from the network including compendia of arts integrated centers and institutes, and curriculums.

Partner Profiles

Visit these pages for snapshots of leadership and key programs, as well as news and the latest language, images, and insights from each a2ru network partner.

Amplification Toolkit

Download an "Activation Map" to help campus teams diagnose *Where Does Arts Integration Live at My Institution?* as well as insights on the work of integrating the arts at a large research university.

Research Insights

a2ru's research page houses briefs, maps, reports, and white papers rooted in the research team's work to clarify and highlight how the arts—including the fine, applied, and performing arts and design—impact research and knowledge production and teaching and learning experiences in research universities for systematic public benefit. The work seeks to address three basic questions to help a2ru partners meet their knowledge, communications, and program implementation goals.

Impacts Map

a2ru interviewed upper-level administration, faculty and students at more than 38 institutions of higher education about the impacts of their interdisciplinary arts-integration work, including teaching, research, and community projects. We asked about what impact they hoped for and what impact they actually saw, as well as how they measured impact.

The **Supporting Practice in Arts Research and Curricula (SPARC) Knowledge Engine** provides a search engine for interviews with faculty, academic leadership, students, and staff to help clarify, define, and highlight the role of the arts and design in the future of higher education. The SPARC project is made possible with support from The Andrew W. Mellon Foundation.

Additional Resources

- Ground Works is a platform prototype for exemplary arts-inclusive research projects and reflection on the processes that drive interdisciplinary collaboration.
- ArtsRx provides higher education resources for arts and health.
- The Hub for Creative Placemaking in Higher Education provides higher education resources for creative placemaking, including case studies, journal articles, funders, toolkits, and information about the beginnings of the field in the "origins and evolution" section.

Visit <https://www.a2ru.org/resources-and-special-projects/>

CASEMAKING & STORYTELLING



Nicholas Allen, University of Georgia; Jinlei Augst and Rebecca Boggs, National Endowment for the Humanities; and Sunil Iyengar and Bill O'Brien, National Endowment for the Arts.
Photo credit Diego Valdez

This past year, we saw the two-year consensus report from the National Academies of Sciences, Engineering and Medicine, *Branches from the Same Tree: The Integration of the Humanities and Arts with Sciences, Engineering, and Medicine in Higher Education* come to fruition. In May 2018, a2ru convened 70 leaders in higher education, government, philanthropy, and industry for a two-day symposium at the National Academies offices in Washington, D.C. Discussion was based on a detailed, evidence-based report describing the known impact of integrative approaches to teaching and learning in higher education on students' academic performance and career readiness. The consensus report recommendations and findings are being used to develop next-steps for higher education and other sector partners to plan how to transform higher education for an enlightened, better prepared, and more competitive workforce and citizenry.

In 2015, the National Academies of Sciences, Engineering, and Medicine convened more than 110 scientists, engineers, artists, humanists, educators, policymakers and industry

executives to start the process to examine the impact of arts integration on academic performance and workforce development. As a result of that meeting, a committee convened to examine the evidence and produce this report. The goal was to produce a consensus report that examines the evidence behind the assertion that educational programs that mutually integrate learning experiences in the humanities and arts with science, technology

engineering, math and medicine lead to improved educational and career outcomes for undergraduate and graduate students.

Town halls scheduled across the country this upcoming year will serve as opportunities to convene leaders and practitioners in a variety of fields to discuss and examine the findings of the report and collaboration ways to integrate into initiatives unique to their regions and institutions.

2018-2019 Town Hall Meetings and discussions centered on *Branches from the Same Tree* will be hosted by the following a2ru partners and affiliates: Academy for the Arts and Sciences; James Madison University; *Leonardo*; Massachusetts Institute of Technology; Penn State; University of Michigan; University of California, Berkeley; University of Colorado, Denver; University of Virginia; University of Wisconsin-Madison; and Virginia Commonwealth University.

For more information or to host your own Town Hall Meeting, contact Maryrose Flanigan, a2ru associate director.

Upcoming a2ru Events

Emerging Creatives Student Summit

February 7-10, 2019

Hosted by James Madison University

National Conference

October 2019

Hosted by the University of Kansas

Emerging Creatives Student Summit

February 2020

Hosted by the University of Cincinnati

National Conference

Fall 2020

Hosted by the University of Wisconsin-Madison